

**1.4.2. Money Incomes and Expenditures of Population,  
Wages/Salaries and Other Incomes**

**Balance of money incomes and expenditures of population.** Money incomes of population for January-December 2003 comprised 1163637.2 mln. drams, and money expenditures - 1158887.7 mln. drams, their growth rates comprised correspondingly 115.1% and 117.5% in comparison with January-December 2002.

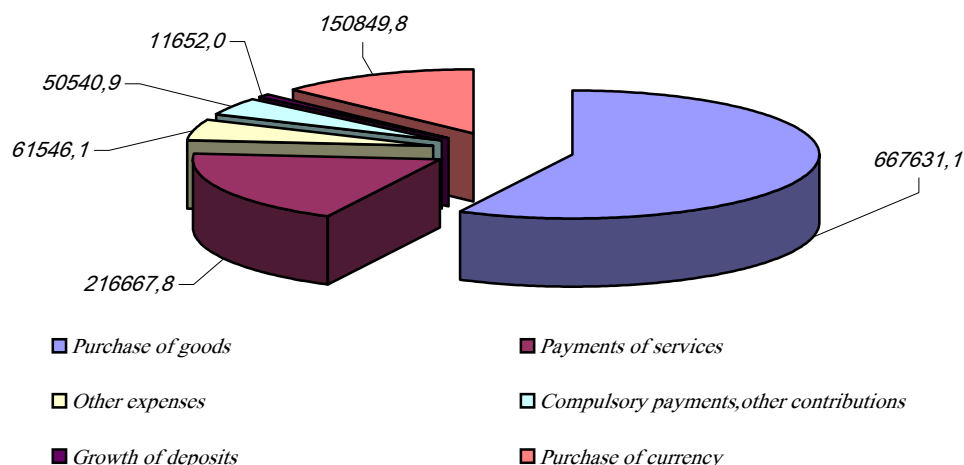
**Real disposable money incomes of population.** Real disposable money incomes of population (incomes less compulsory payments, taking into account the changes in consumer price indices) for January-December 2003 compared to January-December 2002 increased by 9.1%.

**Structure of Use of Money Incomes of Population**

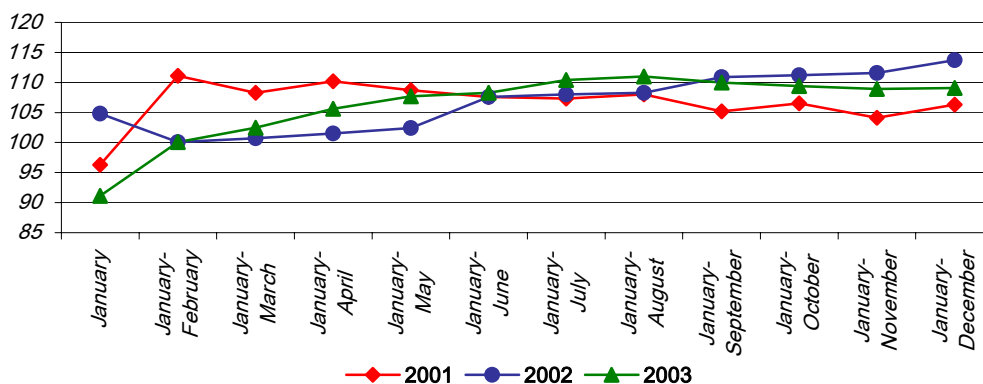
(%)

	Share in incomes		Growth rate for January-December 2003 compared to the same period of 2002	% change in share 2003 compared to 2002
	January-December			
	2002	2003		
<b>Money incomes</b>	<b>100</b>	<b>100</b>	<b>115.1</b>	<b>-</b>
<i>of which used</i>				
for purchasing goods and payments of services	74.1	76.0	118.1	1.9
for compulsory payments and voluntary contributions	3.7	4.3	136.2	0.6
growth of deposits	0.4	1.0	276.7	0.6
purchase of currency	13.9	13.0	106.9	-0.9
other expenses	5.4	5.3	113.0	-0.1
<b>Money expenditures</b>	<b>97.5</b>	<b>99.6</b>	<b>117.5</b>	<b>2.1</b>
<i>Excess of incomes to expenditures</i>	<i>2.5</i>	<i>0.4</i>	<i>18.7</i>	<i>-2.1</i>

**Structure of Money Expenditures of Population**



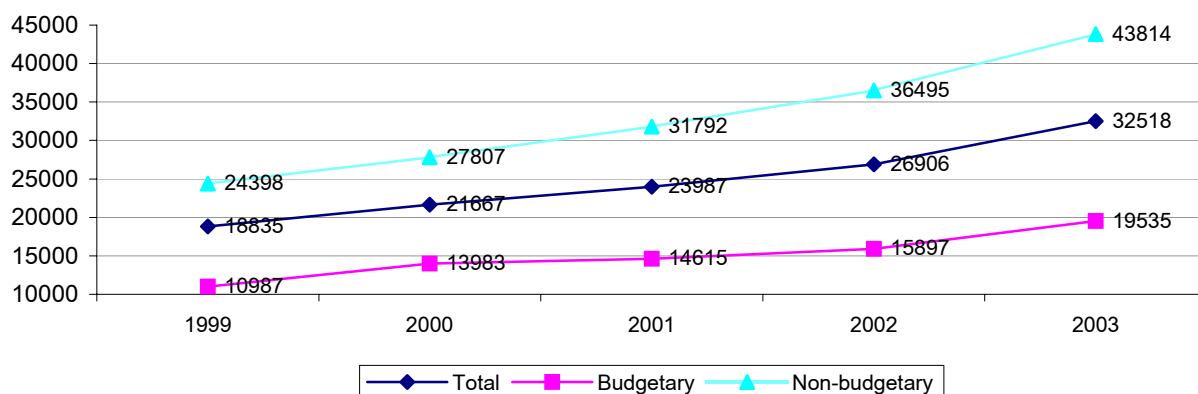
**Dynamics of Real Disposable Money Incomes of Population**  
(in percents compared to the appropriate period of the previous year)



**Labour remuneration.** According to the estimate of preliminary data provided by about 9000 organizations, which present current statistical report on monthly basis, in January-December 2003 the average nominal wages/salaries of employees comprised 32518 drams and increased by 20.9% in comparison with the same period of 2002. In budgetary organizations the wages/salaries of employees, which were estimated according to the current data of the reports received on a quarterly basis from about 4000 organizations financed from the budget, comprised 19535 drams and increased by 22.9% in comparison with the same period of 2002 and the wages/salaries of employees of non-budgetary organizations comprised 43814 drams and increased by 20.1% correspondingly.

**Change and Fluctuation of Average Nominal Wages/Salaries by Sectors of Economy, 2003**

	2003, drams			compared to 2002, %		
	total	budgetary	non-budgetary	total	budgetary	non-budgetary
January-March	29089	17317	39549	118.7	114.0	121.8
January- June	30104	17715	40601	118.9	114.4	118.5
January- September	31319	18444	42093	122.2	118.5	121.4
January- December <sup>1</sup>	32518	19535	43814	120.9	122.9	120.1



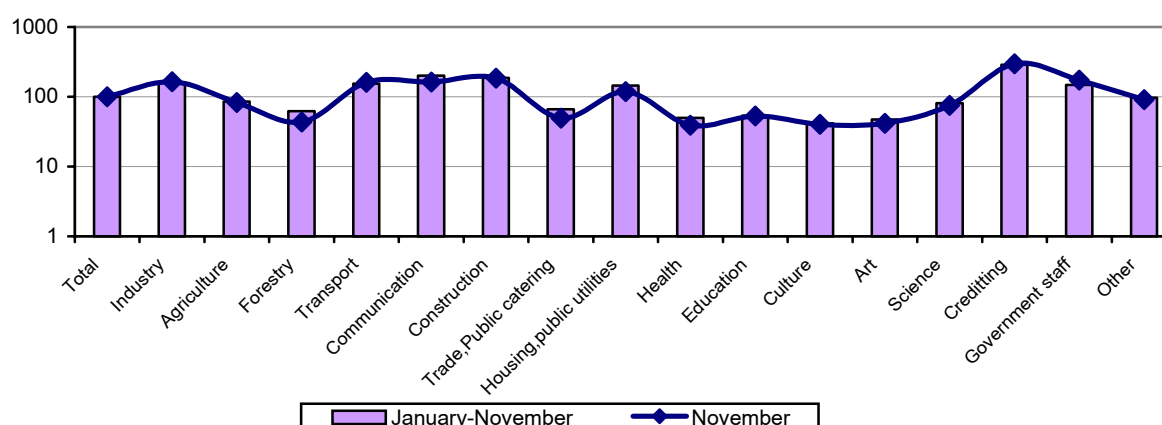
## 1.Real Sector

The average monthly nominal wages/salaries in organizations financed from the budget fluctuated between 13990 drams (in the sphere of culture) and 60025 drams (in the government staff) and in non-budgetary organizations – between 15140 drams (in the sphere of health) and 156298 drams (in the branch of crediting and insurance).

**Changes of Average Nominal Wages/Salaries to 2002 and Fluctuation by Branches of Economy for November 2003**

	Average nominal wages/salaries, drams		% of the total		compared to 2002, %	
	November	January-November	November	January-November	November	January-November
<b>Total</b>	34478	31807	100.0	100.0	126.6	122.7
Industry	54261	52296	157.4	164.4	116.6	132.3
Agriculture	26224	25744	76.1	80.9	123.4	130.1
Forestry	15289	15509	44.3	48.8	94.0	109.1
Transport	48484	50637	140.6	159.2	109.9	118.1
Communication	55721	54188	161.6	170.4	103.1	102.5
Construction	57470	48286	166.7	151.8	124.1	110.0
Trade, public catering	17104	16139	49.6	50.7	90.8	82.2
Housing, public utilities, personal services	43595	40202	126.4	126.4	102.1	111.4
Health care, physical culture and social security	15229	13549	44.2	42.6	116.5	105.1
Education	17629	16956	51.1	53.3	124.7	120.3
Culture	15096	13432	43.8	42.2	125.4	122.6
Art	16033	14606	46.5	45.9	127.5	117.0
Science and scientific services	27353	24989	79.3	78.6	119.5	119.0
Crediting and insurance	156298	124459	453.3	391.3	192.8	122.3
Government staff	59734	48066	173.3	151.1	159.6	129.7
Other	31036	28959	90.0	91.0	109.8	114.3

**Changes in Fluctuation of Wages/Salaries by Branches of Economy Total to Average 2003, %**



<sup>1</sup> Estimate.

## Dynamics of Average Nominal and Actual Wages/Salaries by Months of 2003

	Average nominal wage/salary, AMD	%		Actual wage/salary, AMD	%	
		compared to the same month of 2002	compared to the previous month		compared to the same month of 2002	compared to the previous month
January	27669	117.4	86.6	26579	93.9	83.1
February	27813	118.2	100.5	28237	119.8	102.1
March	29728	119.9	106.9	29877	127.0	107.4
April	29758	120.4	104.8	29175	117.7	98.1
May	30796	119.6	103.5	30431	123.1	102.3
June	31852	119.3	103.4	31412	122.0	102.0
July	33103	125.3	103.9	35030	131.1	110.0
August	33303	126.6	100.6	34087	129.0	103.0
September	34160	126.0	102.6	33327	126.7	100.1
October	33702	124.2	98.7	33736	124.5	98.8
November <sup>✧</sup>	34478	126.6	102.3	33736	124.3	100.1
December <sup>1</sup>	40632	127.1	117.9	38624	141.8	112.0

	Average nominal wage/salary, USD		compared to the same month of 2002, %	Actual wage/salary, USD		compared to the same month of 2002, %
	2003	2002		2003	2002	
January	47	42	113.6	46	42	90.9
February	47	42	114.0	48	41	115.3
March	50	43	116.2	51	43	121.6
April	51	43	118.3	50	42	114.5
May	53	44	118.6	52	43	121.5
June	54	46	118.3	54	44	121.1
July	57	40	142.0	60	38	131.4
August	58	47	122.3	59	47	146.5
September	59	49	122.0	58	51	123.1
October	60	47	128.1	60	49	122.9
November <sup>✧</sup>	61	47	131.0	60	48	128.1
December <sup>1</sup>	72	55	131.4	68	56	146.5

<sup>1</sup> Estimate